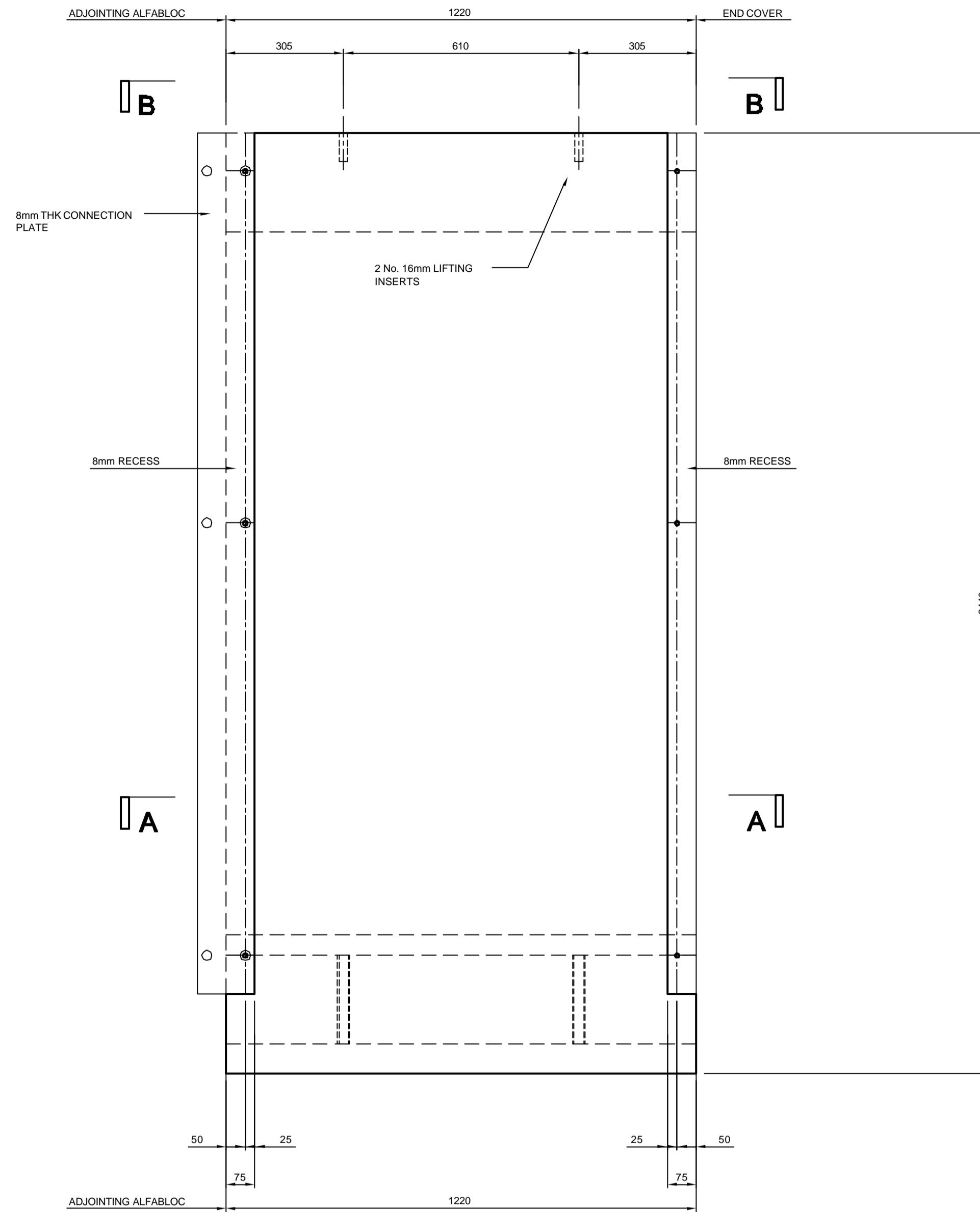
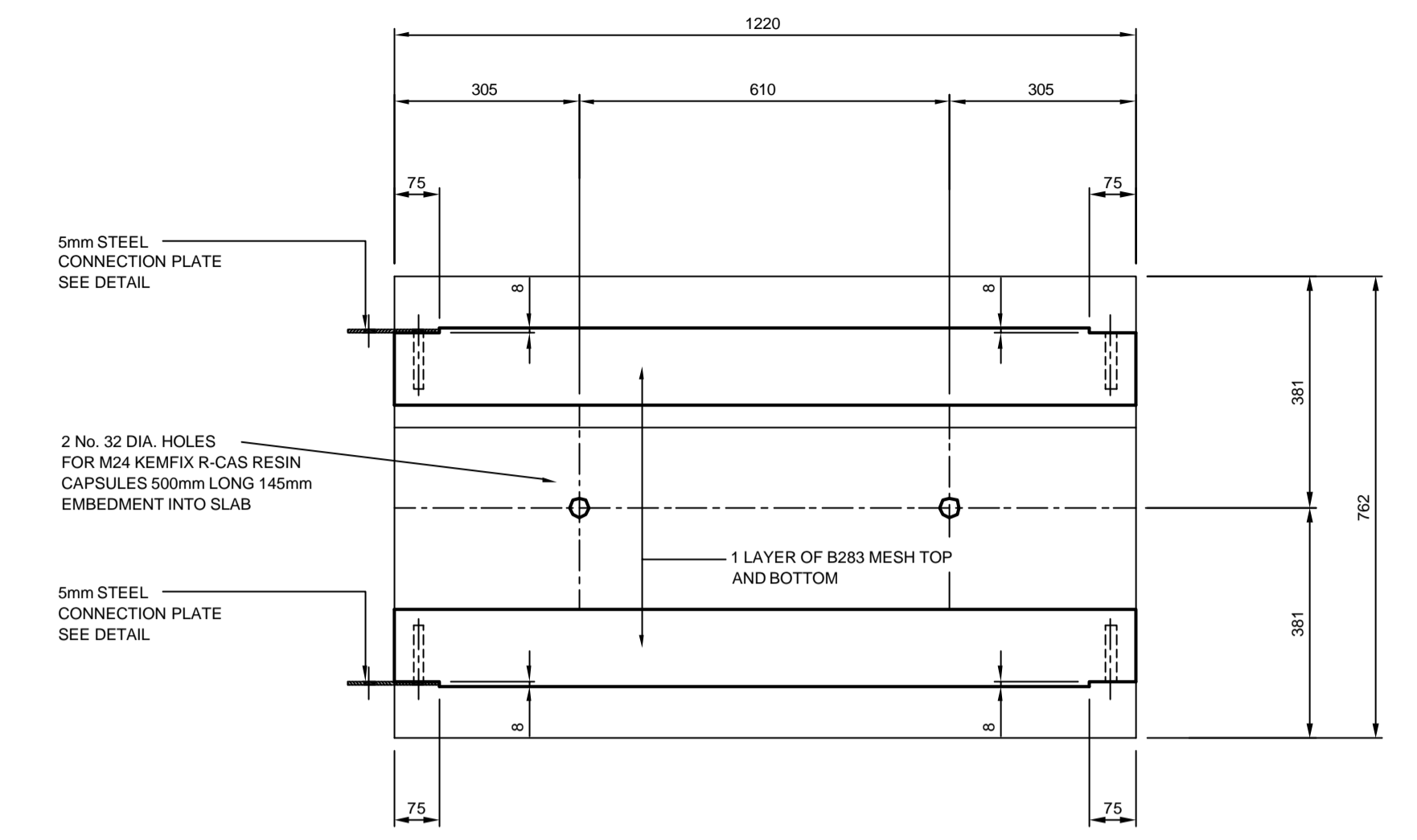


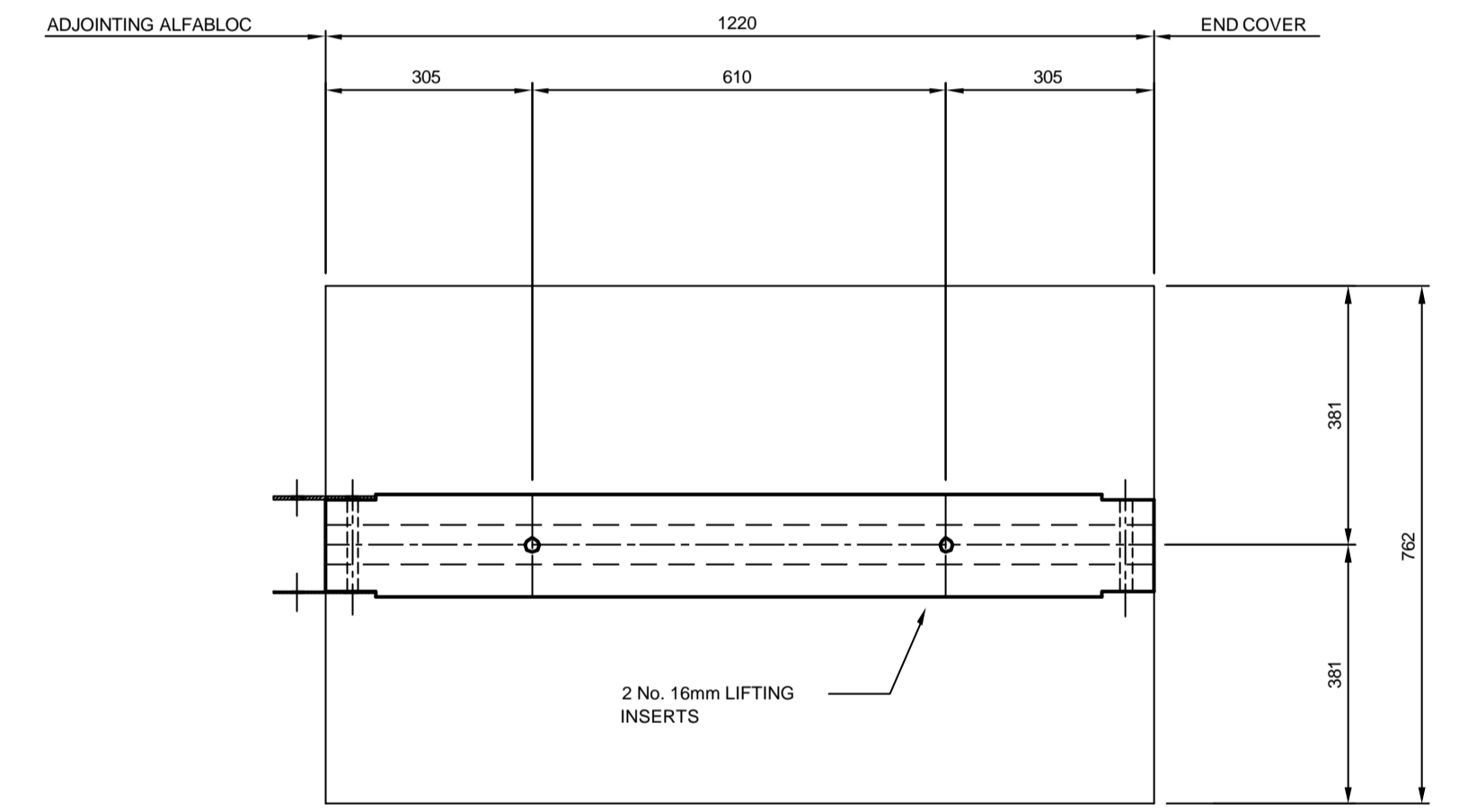
**TYPICAL SECTION THROUGH UNIT**  
1.75 TONNES PER 2440mm ALFABLOC



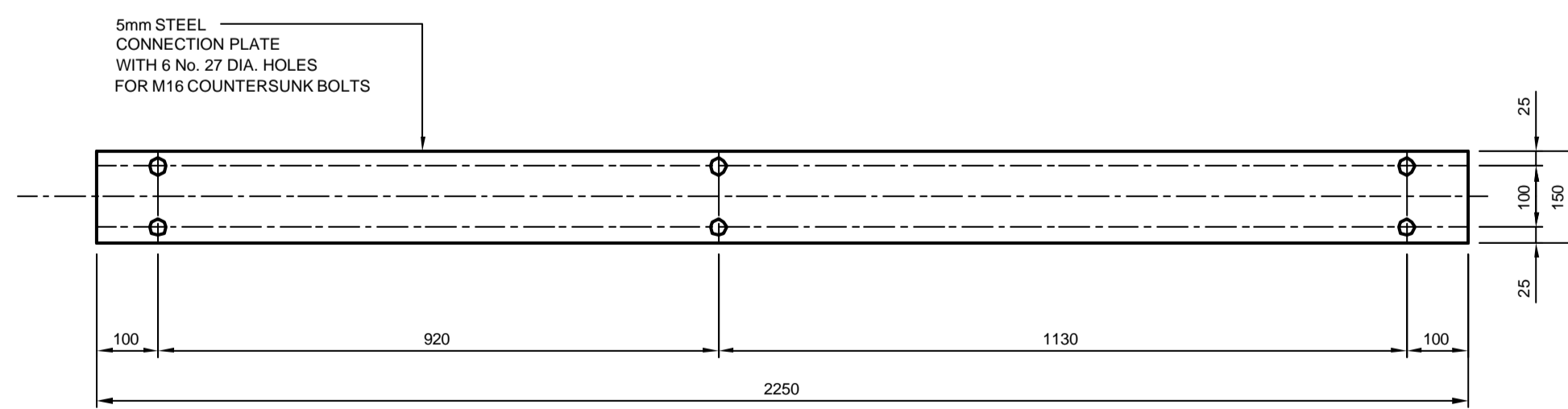
**ELEVATION ON 2440mm ALFABLOC**



**SECTION A-A  
PLAN ON ANCHOR BOLT SETTING OUT**



**SECTION B-B**



**PLAN ON 2440mm ALFABLOC CONNECTION PLATE**  
2 No. REQUIRED PER ALFABLOC

**IN THE EVENT OF ANY ENGINEERING QUERIES CONTACT**

Civil Engineers  
Structural Engineers  
Highways and Drainage Engineers  
Party Wall Surveyors  
Expert Witness and Litigation Support



**CANHAM CONSULTING**

Canham Consulting Ltd The Old School School Lane Norwich  
Norfolk NR7 0EP Tel: 01603 430650 Fax: 01603 430651  
Email: mail@canhamconsulting.co.uk www.canhamconsulting.co.uk

P2	26.02.04	ISSUED FOR REVIEW	CND
P1	20.12.03	ISSUED FOR INFO	CND
rev	date	details	by

DRAWINGS WITH A P REVISION SUFFIX ARE PRELIMINARY ONLY AND NOT FOR CONSTRUCTION

project	POUNDFIELD PRODUCTS LTD STANDARD DRAWINGS		
client	POUNDFIELD PRODUCTS LTD		
title	2440mm ALFABLOC STANDARD PRODUCTION DRAWING		
drawn	design	checked	date
CND	PP	PJF	03.02.04
project reference	drawing number	revision	
10783	02	P2	



**POUNDFIELD PRODUCTS**  
MANUFACTURERS OF PRE-STRESSED AND PRECAST CONCRETE

The Grove Creeting St. Peter Ipswich Suffolk IP6 8QG  
TEL: 01449 723150 Fax: 01449 723151 www.poundfield.com

This drawing is copyright and is not to be reproduced without the permission of Poundfield Products Ltd